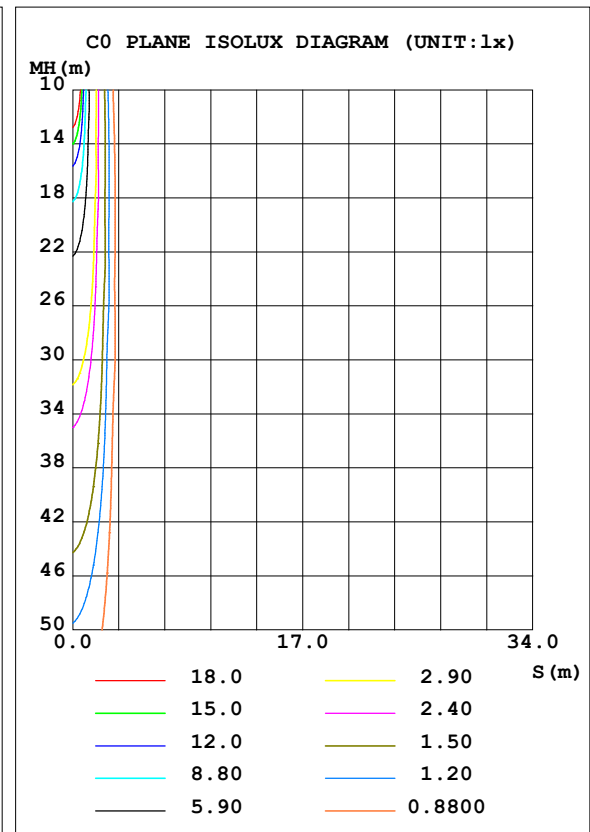
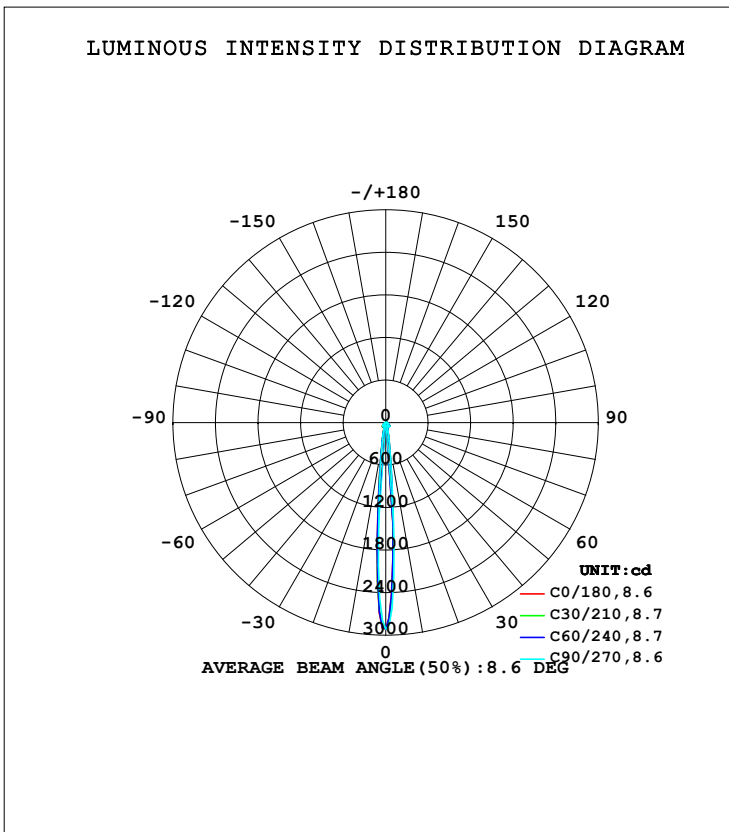


LUMINAIRE PHOTOMETRIC TEST REPORT

Test:U:232.39V I:0.0401A P:8.1105W PF:0.8710 Freq:50.00Hz Lamp Flux:277.995x1 lm		
NAME: GD21P10C	TYPE:Track Light	WEIGHT:
SPEC.:	DIM.:	SERIAL No.:
MFR.: FOSHAN RONSE LIGHTING TECHNOLOGY CO.,LTD	SUR.:0.05	Shielding Angle:

DATA OF LAMP		PHOTOMETRIC DATA			
MODEL	GD21P10C	Imax (cd)	2959	S/MH (C0/180)	0.16
NOMINAL POWER (W)	10W	LOR (%)	100.0	S/MH (C90/270)	0.14
RATED VOLTAGE (V)	230	TOTAL FLUX (lm)	277.99	η UP, DN (C0-180)	0.0,51.2
NOMINAL FLUX (lm)	277.995	CIE CLASS	DIRECT	η UP, DN (C180-360)	0.0,48.8
LAMPS INSIDE	1	η up (%)	0.0	CIBSE SHR NOM	0.00
TEST VOLTAGE (V)	232.387	η down (%)	100.0	CIBSE SHR MAX	1.00



C Range: 0 - 360DEG
 C Interval: 30.0DEG
 Test Speed: HIGH
 Temperature:25.3DEG
 Operators:Jianrong Li
 Test Date:2022-07-21

γ Range: 0 - 90DEG
 γ Interval: 1.0DEG
 Test System:EVERFINE GO-2000B_V1 SYSTEM V2.0.286
 Humidity:65.0%
 Test Distance:7.264m [K=1.0000]
 Remarks: Test by minnum beam angle

Checker: Jianrong Li

Assessor: Jianrong Li

ZONAL FLUX DIAGRAM

ZONAL FLUX DIAGRAM:

γ	C0	C45	C90	C135	C180	C225	C270	C315	γ	Φ zone	Φ total	%lum,lamp
10	288.3	297.9	318.3	346.5	336.3	326.3	289.6	277.6	0- 10	87.55	87.55	31.5,31.5
20	67.77	67.77	66.85	71.90	71.37	69.41	63.37	65.79	10- 20	38.27	125.8	45.3,45.3
30	50.02	50.83	50.83	54.81	55.62	53.78	49.32	46.76	20- 30	24.26	150.1	54,54
40	68.52	68.60	70.46	74.27	74.32	70.14	64.72	61.55	30- 40	39.99	190.1	68.4,68.4
50	47.29	46.84	48.19	49.44	48.76	46.41	42.72	41.88	40- 50	45.65	235.7	84.8,84.8
60	20.25	19.96	20.34	20.87	20.35	19.56	17.34	17.62	50- 60	28.67	264.4	95.1,95.1
70	5.934	5.847	5.853	6.016	5.794	5.535	3.394	4.757	60- 70	11.39	275.8	99.2,99.2
80	0.0732	0.0714	0.0510	0.0614	0.0313	0.0365	0.0098	0.0306	70- 80	2.207	278.0	100,100
90	0	0	0	0	0	0	0	0	80- 90	0.0078	278.0	100,100
100									90-100			
110									100-110			
120									110-120			
130									120-130			
140									130-140			
150									140-150			
160									150-160			
170									160-170			
180									170-180			
DEG	LUMINOUS INTENSITY:cd									UNIT:lm		

Conical surface Flux(90deg): 214.18 lm

%lum = 77.0%

%lamp = 77.0%

Conical surface Flux(120deg): 264.39 lm

%lum = 95.1%

%lamp = 95.1%

C Range: 0 - 360DEG
 C Interval: 30.0DEG
 Test Speed: HIGH
 Temperature:25.3DEG
 Operators:Jianrong Li
 Test Date:2022-07-21

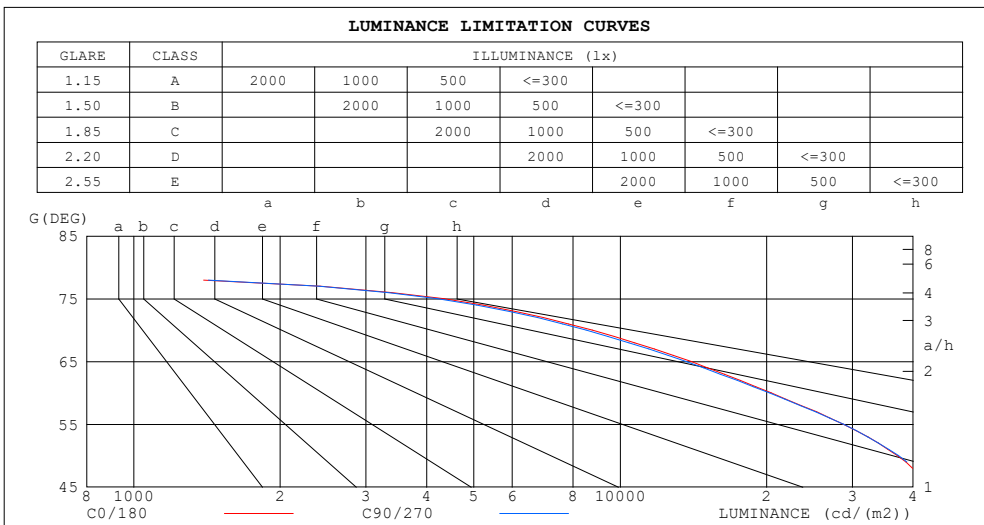
γ Range: 0 - 90DEG
 γ Interval: 1.0DEG
 Test System:EVERFINE GO-2000B_V1 SYSTEM V2.0.286
 Humidity:65.0%
 Test Distance:7.264m [K=1.0000]
 Remarks: Test by minnum beam angle

Checker: Jianrong Li

Assessor: Jianrong Li

LUMINANCE LIMITATION CURVES

Test:U:232.39V I:0.0401A P:8.1105W PF:0.8710 Freq:50.00Hz Lamp Flux:277.995x1 lm		
NAME: GD21P10C	TYPE:Track Light	WEIGHT:
SPEC.:	DIM.:	SERIAL No.:
MFR.: FOSHAN RONSE LIGHTING TECHNOLOGY CO.,LTD	SUR.:0.05	Shielding Angle:



LUMINANCE cd/(m2)		
G (DEG)	C0/180	C90/270
85	0	0
80	213	146
75	4341	4213
70	8756	8516
65	13979	13657
60	20437	20247
55	28719	28763
50	37125	37311
45	43268	43829

C Range: 0 - 360DEG
 C Interval: 30.0DEG
 Test Speed: HIGH
 Temperature:25.3DEG
 Operators:Jianrong Li
 Test Date:2022-07-21

γ Range: 0 - 90DEG
 γ Interval: 1.0DEG
 Test System:EVERFINE GO-2000B_V1 SYSTEM V2.0.286
 Humidity:65.0%
 Test Distance:7.264m [K=1.0000]
 Remarks: Test by minnum beam angle

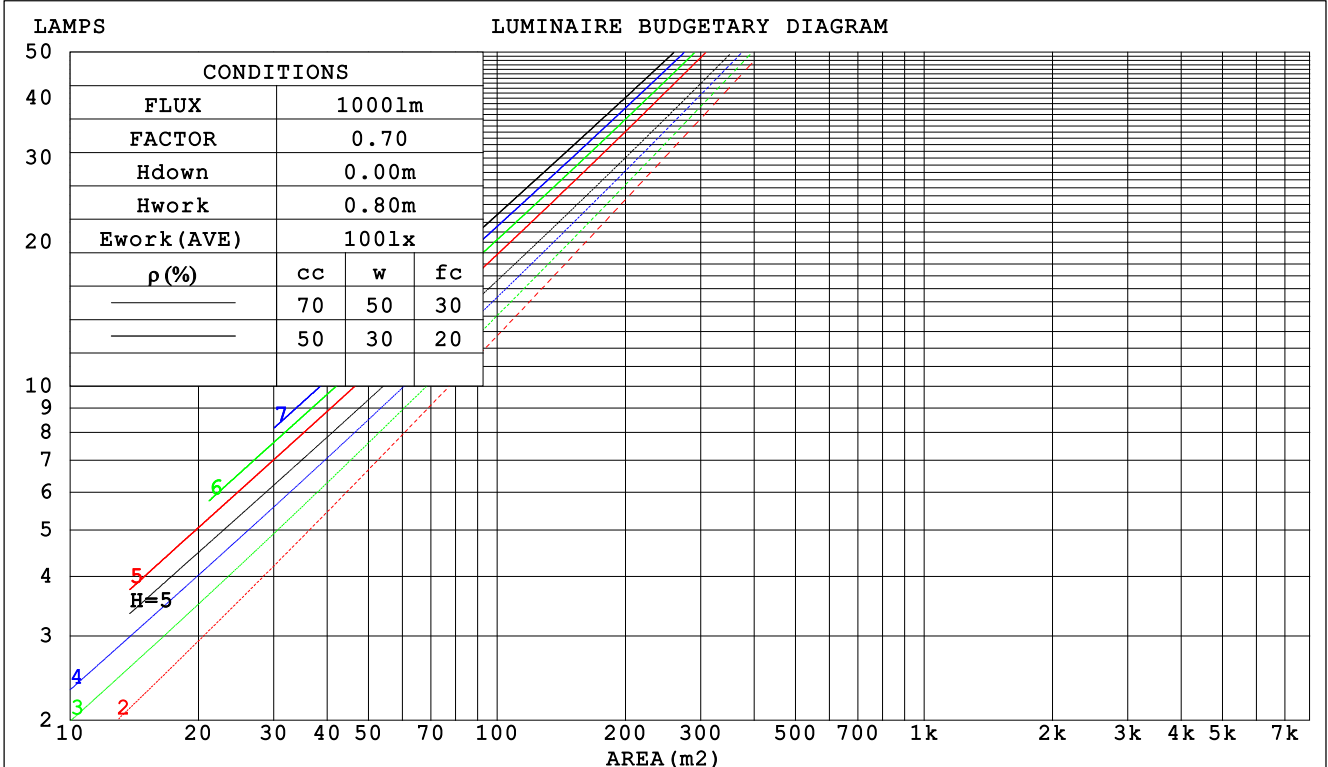
Checker: Jianrong Li

Assessor: Jianrong Li

CU AND LUMINAIRE BUDGETARY ESTIMATE DIAGRAM

Test:U:232.39V I:0.0401A P:8.1105W PF:0.8710 Freq:50.00Hz Lamp Flux:277.995x1 lm		
NAME: GD21P10C	TYPE:Track Light	WEIGHT:
SPEC.:	DIM.:	SERIAL No.:
MFR.: FOSHAN RONSE LIGHTING TECHNOLOGY CO.,LTD	SUR.:0.05	Shielding Angle:

ρcc	80%			70%			50%			30%			10%			0
	ρw	50%	30%	10%	50%	30%	10%	50%	30%	10%	50%	30%	10%	50%	30%	10%
ρfc	20%			20%			20%			20%			20%			0
RCR	RCR:Room Cavity Ratio															
	Coefficients of Utilization(CU)															
0.0	1.19	1.19	1.19	1.16	1.16	1.16	1.11	1.11	1.11	1.06	1.06	1.06	1.02	1.02	1.02	1.00
1.0	1.10	1.07	1.05	1.08	1.05	1.03	1.04	1.02	.00	.00	.98	.97	.96	.95	.94	.92
2.0	1.01	.96	.93	.99	.95	.92	.96	.93	.90	.93	.90	.88	.90	.88	.86	.84
3.0	.93	.88	.83	.92	.87	.83	.89	.85	.81	.87	.83	.80	.84	.81	.79	.77
4.0	.87	.81	.76	.85	.80	.76	.83	.78	.75	.81	.77	.74	.79	.76	.73	.71
5.0	.81	.75	.70	.80	.74	.70	.78	.73	.69	.76	.72	.68	.75	.71	.68	.66
6.0	.76	.70	.65	.75	.69	.65	.74	.69	.65	.72	.68	.64	.71	.67	.64	.62
7.0	.72	.66	.61	.71	.65	.61	.70	.65	.61	.69	.64	.61	.68	.63	.60	.59
8.0	.68	.62	.58	.68	.62	.58	.67	.61	.58	.66	.61	.57	.65	.60	.57	.56
9.0	.65	.59	.55	.65	.59	.55	.64	.59	.55	.63	.58	.55	.62	.58	.55	.53
10.0	.63	.57	.53	.62	.57	.53	.61	.56	.53	.61	.56	.53	.60	.56	.53	.51



C Range: 0 - 360DEG
 C Interval: 30.0DEG
 Test Speed: HIGH
 Temperature:25.3DEG
 Operators:Jianrong Li
 Test Date:2022-07-21

γ Range: 0 - 90DEG
 γ Interval: 1.0DEG
 Test System:EVERFINE GO-2000B_V1 SYSTEM V2.0.286
 Humidity:65.0%
 Test Distance:7.264m [K=1.0000]
 Remarks: Test by minnum beam angle

Checker: Jianrong Li

Assessor: Jianrong Li

WEC AND CCEC

Test:U:232.39V I:0.0401A P:8.1105W PF:0.8710 Freq:50.00Hz Lamp Flux:277.995x1 lm		
NAME: GD21P10C	TYPE:Track Light	WEIGHT:
SPEC.:	DIM.:	SERIAL No.:
MFR.: FOSHAN RONSE LIGHTING TECHNOLOGY CO.,LTD	SUR.:0.05	Shielding Angle:

ρcc	80%			70%			50%			30%			10%			0
ρw	50%	30%	10%	50%	30%	10%	50%	30%	10%	50%	30%	10%	50%	30%	10%	0
ρfc	20%			20%			20%			20%			20%			0
RCR	RCR:Room Cavity Ratio						Wall Exitance Coefficients (WEC)									
0.0																
1.0	.196	.112	.035	.190	.108	.034	.177	.102	.032	.165	.095	.031	.155	.090	.029	
2.0	.191	.104	.032	.185	.102	.031	.174	.097	.030	.164	.092	.029	.155	.088	.028	
3.0	.181	.096	.029	.176	.094	.028	.167	.090	.027	.158	.087	.027	.150	.083	.026	
4.0	.170	.089	.026	.166	.087	.026	.158	.084	.025	.151	.081	.024	.144	.078	.024	
5.0	.160	.082	.024	.156	.080	.023	.149	.078	.023	.143	.075	.022	.137	.073	.022	
6.0	.150	.075	.022	.147	.074	.021	.141	.072	.021	.135	.070	.021	.130	.068	.020	
7.0	.141	.070	.020	.138	.069	.020	.133	.067	.019	.128	.066	.019	.123	.064	.019	
8.0	.133	.065	.018	.130	.064	.018	.126	.063	.018	.121	.061	.018	.117	.060	.017	
9.0	.125	.061	.017	.123	.060	.017	.119	.059	.017	.115	.058	.016	.111	.056	.016	
10.0	.119	.057	.016	.117	.056	.016	.113	.055	.016	.109	.054	.015	.106	.053	.015	

ρcc	80%			70%			50%			30%			10%			0
ρw	50%	30%	10%	50%	30%	10%	50%	30%	10%	50%	30%	10%	50%	30%	10%	0
ρfc	20%			20%			20%			20%			20%			0
RCR	RCR:Room Cavity Ratio						Ceiling Cavity Exitance Coefficients (CCEC)									
0.0	.190	.190	.190	.163	.163	.163	.111	.111	.111	.064	.064	.064	.020	.020	.020	
1.0	.172	.157	.143	.148	.135	.123	.101	.093	.085	.058	.054	.050	.019	.017	.016	
2.0	.159	.132	.110	.136	.114	.095	.093	.079	.066	.054	.046	.039	.017	.015	.013	
3.0	.147	.114	.087	.126	.098	.075	.087	.068	.053	.050	.040	.031	.016	.013	.010	
4.0	.137	.099	.070	.118	.086	.061	.081	.060	.043	.047	.035	.025	.015	.011	.008	
5.0	.129	.088	.058	.110	.076	.050	.076	.053	.035	.044	.031	.021	.014	.010	.007	
6.0	.121	.079	.048	.104	.068	.042	.072	.048	.030	.042	.028	.018	.013	.009	.006	
7.0	.114	.071	.041	.098	.062	.036	.068	.043	.025	.039	.025	.015	.013	.008	.005	
8.0	.107	.065	.035	.092	.056	.031	.064	.039	.022	.037	.023	.013	.012	.008	.004	
9.0	.101	.059	.031	.087	.051	.027	.060	.036	.019	.035	.021	.011	.011	.007	.004	
10.0	.096	.055	.027	.083	.048	.024	.057	.033	.017	.033	.020	.010	.011	.006	.003	

C Range: 0 - 360DEG
 C Interval: 30.0DEG
 Test Speed: HIGH
 Temperature:25.3DEG
 Operators:Jianrong Li
 Test Date:2022-07-21

γ Range: 0 - 90DEG
 γ Interval: 1.0DEG
 Test System:EVERFINE GO-2000B_V1 SYSTEM V2.0.286
 Humidity:65.0%
 Test Distance:7.264m [K=1.0000]
 Remarks: Test by minnum beam angle

Checker: Jianrong Li

Assessor: Jianrong Li

UGR(Unified Glare Rating) Table

Test:U:232.39V I:0.0401A P:8.1105W PF:0.8710 Freq:50.00Hz Lamp Flux:277.995x1 lm											
NAME: GD21P10C					TYPE:Track Light			WEIGHT:			
SPEC.:					DIM.:			SERIAL No.:			
MFR.: FOSHAN RONSE LIGHTING TECHNOLOGY CO.,LTD					SUR.:0.05			Shielding Angle:			
ceiling/cavity	0.7	0.7	0.5	0.5	0.3	0.7	0.7	0.5	0.5	0.3	
walls	0.5	0.3	0.5	0.3	0.3	0.5	0.3	0.5	0.3	0.3	
working plane	0.2	0.2	0.2	0.2	0.2	0.2	0.2	0.2	0.2	0.2	
Room dimensions	Viewed crosswise					Viewed endwise					
x = 2H y = 2H	2H	27.7	28.7	27.9	28.9	29.0	27.5	28.6	27.8	28.7	28.9
	3H	27.8	28.8	28.1	29.0	29.2	27.7	28.7	28.0	28.9	29.1
	4H	27.8	28.7	28.1	28.9	29.2	27.7	28.6	28.0	28.8	29.0
	6H	27.7	28.6	28.0	28.8	29.1	27.6	28.4	27.9	28.7	28.9
	8H	27.7	28.5	28.0	28.8	29.0	27.5	28.4	27.8	28.6	28.9
	12H	27.6	28.4	28.0	28.7	29.0	27.5	28.3	27.8	28.5	28.8
	4H 2H	27.8	28.7	28.1	28.9	29.1	27.7	28.6	28.0	28.8	29.0
	3H	28.0	28.8	28.3	29.1	29.4	27.9	28.7	28.2	28.9	29.2
	4H	28.0	28.7	28.3	29.0	29.3	27.8	28.6	28.2	28.9	29.2
	6H	27.9	28.5	28.3	28.9	29.2	27.8	28.4	28.1	28.7	29.1
	8H	27.8	28.4	28.2	28.8	29.2	27.7	28.3	28.1	28.6	29.0
	12H	27.8	28.3	28.2	28.7	29.1	27.7	28.2	28.1	28.6	29.0
	8H 4H	27.9	28.5	28.3	28.8	29.2	27.7	28.3	28.1	28.7	29.1
	6H	27.8	28.3	28.2	28.7	29.1	27.7	28.1	28.1	28.5	28.9
	8H	27.7	28.2	28.2	28.6	29.0	27.6	28.0	28.1	28.4	28.9
	12H	27.7	28.0	28.2	28.5	29.0	27.6	27.9	28.0	28.4	28.8
	12H 4H	27.8	28.4	28.2	28.7	29.1	27.7	28.2	28.1	28.6	29.0
	6H	27.7	28.2	28.2	28.6	29.0	27.6	28.0	28.1	28.4	28.9
	8H	27.7	28.0	28.2	28.5	29.0	27.6	27.9	28.0	28.4	28.8
Variations with the observer position at spacings:											
S = 1.0H	+ 1.0 / - 1.1					+ 1.0 / - 1.2					
1.5H	+ 0.6 / - 1.0					+ 0.7 / - 0.9					
2.0H	+ 2.0 / - 2.7					+ 2.1 / - 3.0					

CIE Pub.117, 278.0 lm Total Lamp Luminous Flux Correct (8log(F/F0) = -4.4)
 Area: 0.002 m2

C Range: 0 - 360DEG
 C Interval: 30.0DEG
 Test Speed: HIGH
 Temperature:25.3DEG
 Operators:Jianrong Li
 Test Date:2022-07-21

γ Range: 0 - 90DEG
 γ Interval: 1.0DEG
 Test System:EVERFINE GO-2000B_V1 SYSTEM V2.0.286
 Humidity:65.0%
 Test Distance:7.264m [K=1.0000]
 Remarks: Test by minnum beam angle

Checker: Jianrong Li

Assessor: Jianrong Li

UTILIZATION FACTORS TABLE

Test:U:232.39V I:0.0401A P:8.1105W PF:0.8710 Freq:50.00Hz Lamp Flux:277.995x1 lm		
NAME: GD21P10C	TYPE:Track Light	WEIGHT:
SPEC.:	DIM.:	SERIAL No.:
MFR.: FOSHAN RONSE LIGHTING TECHNOLOGY CO.,LTD	SUR.:0.05	Shielding Angle:

REFLECTANCE										
Ceiling	0.8	0.8	0.8	0.7	0.7	0.7	0.5	0.5	0.5	0
Walls	0.7	0.5	0.3	0.7	0.5	0.3	0.7	0.5	0.3	0
Working plane	0.2	0.2	0.2	0.2	0.2	0.2	0.2	0.2	0.2	0
ROOM INDEX	UTILIZATION FACTORS (PERCENT) $k(RI) \times RCR = 5$									
k = 0.60	71	62	57	71	62	56	70	61	56	51
0.80	81	72	67	80	72	66	79	71	66	61
1.00	88	80	75	87	80	75	85	80	74	69
1.25	94	87	82	93	86	81	91	85	81	75
1.50	98	91	87	97	91	86	94	89	85	79
2.00	103	97	93	102	96	92	99	94	91	84
2.50	106	100	96	104	99	95	101	97	93	87
3.00	108	103	100	106	102	99	103	99	96	89
4.00	111	107	104	109	105	102	105	102	100	92
5.00	112	109	106	110	107	105	106	104	102	94
ROOM INDEX	UF(total)									Direct
According to DIN EN 13032-2 2004			Suspended				SHRNOM = 1.25			

C Range: 0 - 360DEG
 C Interval: 30.0DEG
 Test Speed: HIGH
 Temperature:25.3DEG
 Operators:Jianrong Li
 Test Date:2022-07-21

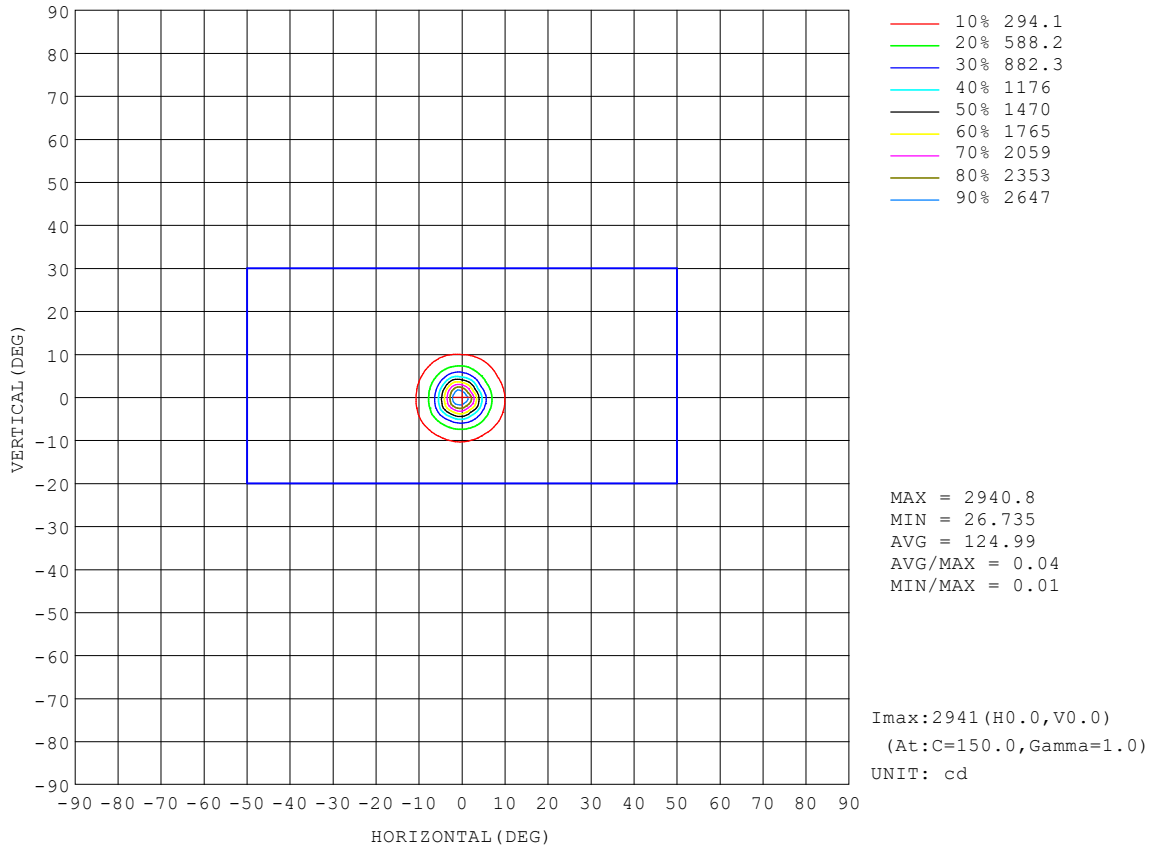
γ Range: 0 - 90DEG
 γ Interval: 1.0DEG
 Test System:EVERFINE GO-2000B_V1 SYSTEM V2.0.286
 Humidity:65.0%
 Test Distance:7.264m [K=1.0000]
 Remarks: Test by minnum beam angle

Checker: Jianrong Li

Assessor: Jianrong Li

ISOCANDELA DIAGRAM

Test:U:232.39V I:0.0401A P:8.1105W PF:0.8710 Freq:50.00Hz Lamp Flux:277.995x1 lm		
NAME: GD21P10C	TYPE:Track Light	WEIGHT:
SPEC.:	DIM.:	SERIAL No.:
MFR.: FOSHAN RONSE LIGHTING TECHNOLOGY CO.,LTD	SUR.:0.05	Shielding Angle:



C Range: 0 - 360DEG
 C Interval: 30.0DEG
 Test Speed: HIGH
 Temperature:25.3DEG
 Operators:Jianrong Li
 Test Date:2022-07-21

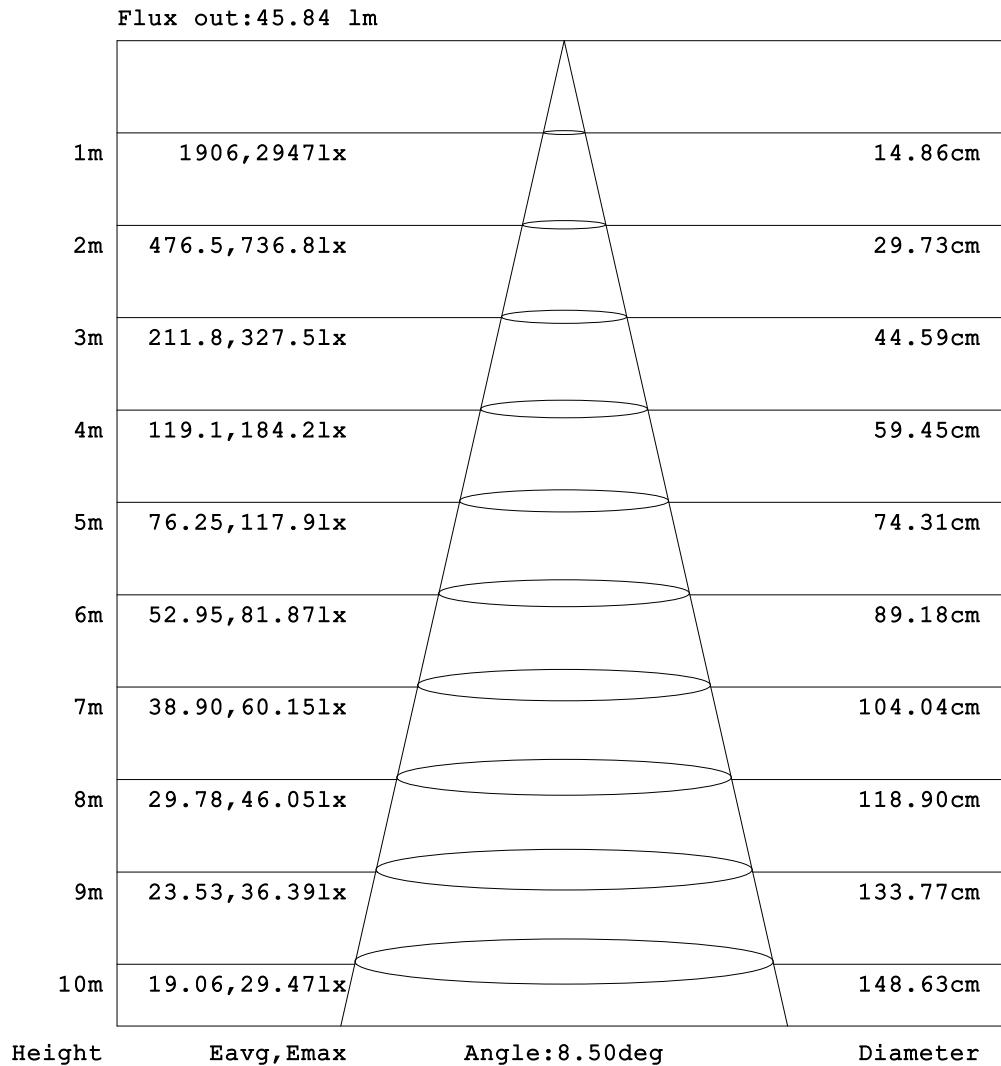
γ Range: 0 - 90DEG
 γ Interval: 1.0DEG
 Test System:EVERFINE GO-2000B_V1 SYSTEM V2.0.286
 Humidity:65.0%
 Test Distance:7.264m [K=1.0000]
 Remarks: Test by minnum beam angle

Checker: Jianrong Li

Assessor: Jianrong Li

AAI Figure

Test:U:232.39V I:0.0401A P:8.1105W PF:0.8710 Freq:50.00Hz Lamp Flux:277.995x1 lm		
NAME: GD21P10C	TYPE:Track Light	WEIGHT:
SPEC.:	DIM.:	SERIAL No.:
MFR.: FOSHAN RONSE LIGHTING TECHNOLOGY CO.,LTD	SUR.:0.05	Shielding Angle:



Note:The Curves indicate the illuminated area and the average illumination when the luminaire is at different distance.

C Range: 0 - 360DEG
 C Interval: 30.0DEG
 Test Speed: HIGH
 Temperature:25.3DEG
 Operators:Jianrong Li
 Test Date:2022-07-21

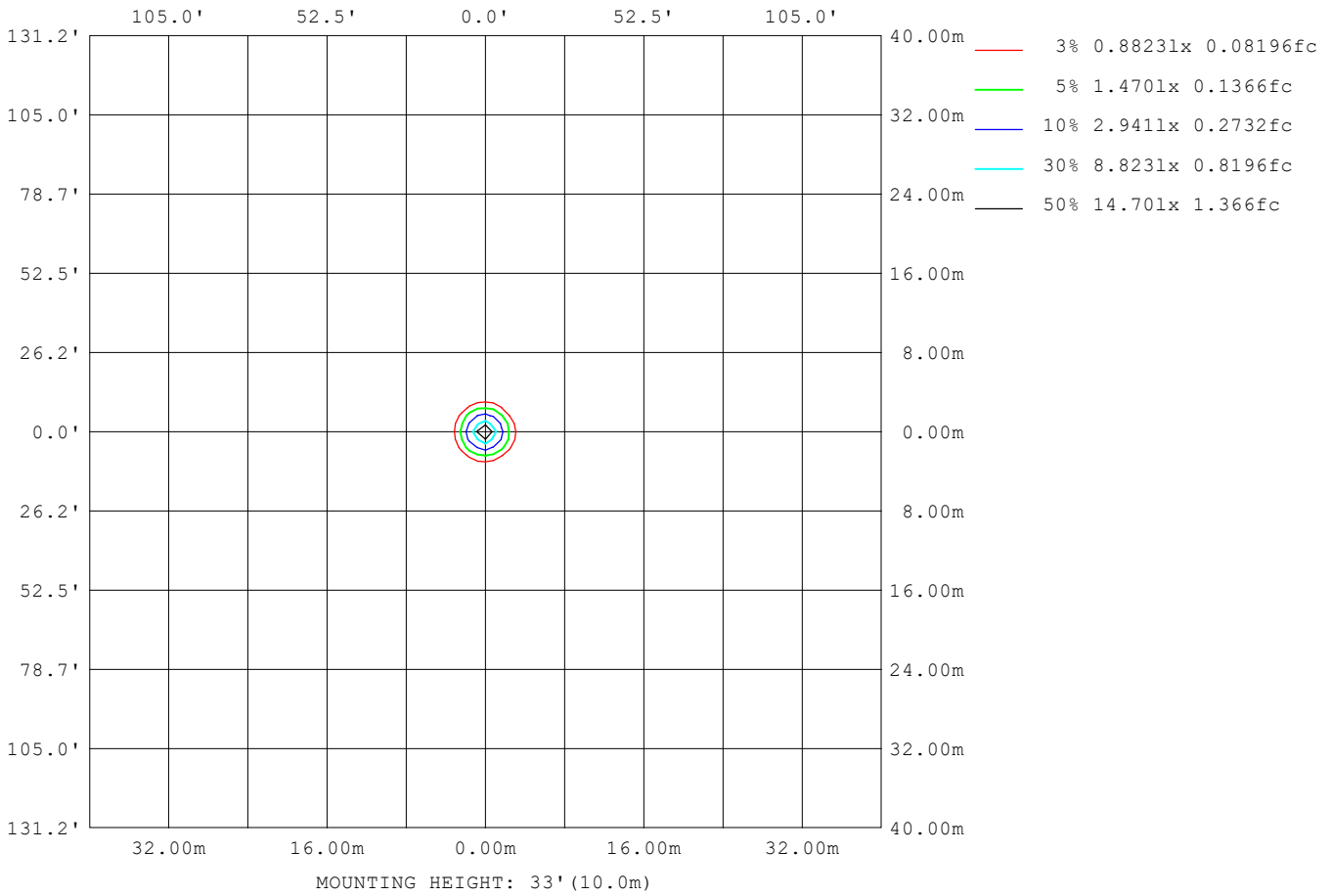
γ Range: 0 - 90DEG
 γ Interval: 1.0DEG
 Test System:EVERFINE GO-2000B_V1 SYSTEM V2.0.286
 Humidity:65.0%
 Test Distance:7.264m [K=1.0000]
 Remarks: Test by minnum beam angle

Checker: Jianrong Li

Assessor: Jianrong Li

ISOLUX DIAGRAM

Test:U:232.39V I:0.0401A P:8.1105W PF:0.8710 Freq:50.00Hz Lamp Flux:277.995x1 lm		
NAME: GD21P10C	TYPE:Track Light	WEIGHT:
SPEC.:	DIM.:	SERIAL No.:
MFR.: FOSHAN RONSE LIGHTING TECHNOLOGY CO.,LTD	SUR.:0.05	Shielding Angle:



C Range: 0 - 360DEG
 C Interval: 30.0DEG
 Test Speed: HIGH
 Temperature:25.3DEG
 Operators:Jianrong Li
 Test Date:2022-07-21

γ Range: 0 - 90DEG
 γ Interval: 1.0DEG
 Test System:EVERFINE GO-2000B_V1 SYSTEM V2.0.286
 Humidity:65.0%
 Test Distance:7.264m [K=1.0000]
 Remarks: Test by minnum beam angle

Checker: Jianrong Li

Assessor: Jianrong Li

LED Avg.L Report

Test:U:232.39V I:0.0401A P:8.1105W PF:0.8710 Freq:50.00Hz Lamp Flux:277.995x1 lm		
NAME: GD21P10C	TYPE:Track Light	WEIGHT:
SPEC.:	DIM.:	SERIAL No.:
MFR.: FOSHAN RONSE LIGHTING TECHNOLOGY CO.,LTD	SUR.:0.05	Shielding Angle:

AvgL	cd/m2
L_0~180 (65) av	13777
L_0~180 (75) av	4221
L_0~180 (85) av	0
L_90~270 (65) av	12344
L_90~270 (75) av	2356
L_90~270 (85) av	0
L_45 (65) av	13181
L_45 (75) av	3692
L_45 (85) av	0

Standard: GB/T 29293-2012

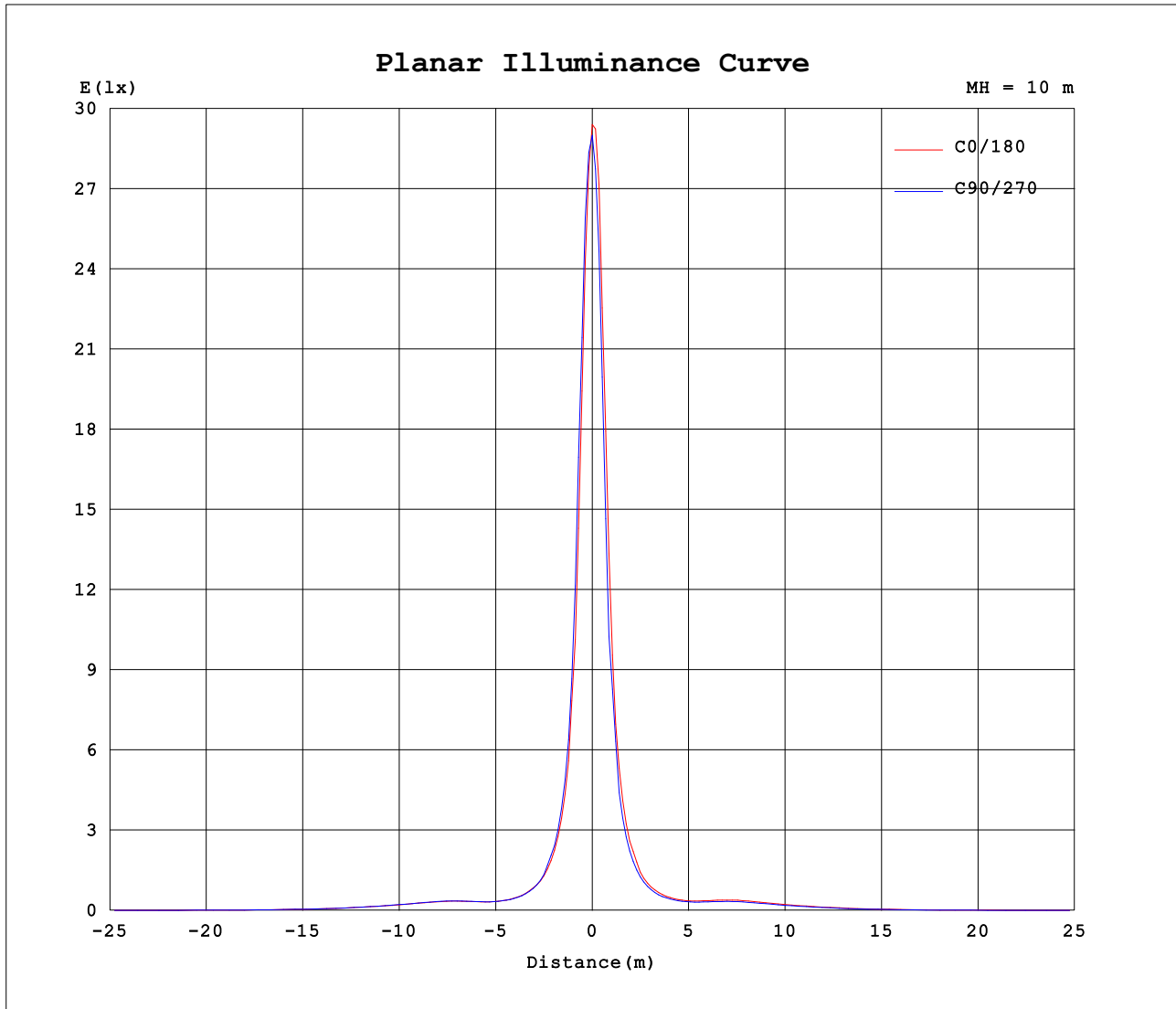
C Range: 0 - 360DEG
 C Interval: 30.0DEG
 Test Speed: HIGH
 Temperature:25.3DEG
 Operators:Jianrong Li
 Test Date:2022-07-21

γ Range: 0 - 90DEG
 γ Interval: 1.0DEG
 Test System:EVERFINE GO-2000B_V1 SYSTEM V2.0.286
 Humidity:65.0%
 Test Distance:7.264m [K=1.0000]
 Remarks: Test by minnum beam angle

Checker: Jianrong Li

Assessor: Jianrong Li

Planar Illuminance Curve



C Range: 0 - 360DEG
 C Interval: 30.0DEG
 Test Speed: HIGH
 Temperature: 25.3DEG
 Operators: Jianrong Li
 Test Date: 2022-07-21

γ Range: 0 - 90DEG
 γ Interval: 1.0DEG
 Test System: EVERFINE GO-2000B_V1 SYSTEM V2.0.286
 Humidity: 65.0%
 Test Distance: 7.264m [K=1.0000]
 Remarks: Test by minnum beam angle

Checker: Jianrong Li

Assessor: Jianrong Li

LUMINOUS DISTRIBUTION INTENSITY DATA

Test:U:232.39V I:0.0401A P:8.1105W PF:0.8710 Freq:50.00Hz Lamp Flux:277.995x1 lm		
NAME: GD21P10C	TYPE:Track Light	WEIGHT:
SPEC.:	DIM.:	SERIAL No.:
MFR.: FOSHAN RONSE LIGHTING TECHNOLOGY CO.,LTD	SUR.:0.05	Shielding Angle:

Table--1

UNIT: cd

C (DEG) \ γ (DEG)	0	30	60	90	120	150	180	210	240	270	300	330							
0	2914	2914	2914	2914	2914	2914	2914	2914	2914	2914	2914	2914							
5	1016	1093	1065	1234	1284	1503	1338	1254	1268	1043	995	893							
10	288	301	294	318	329	364	336	328	325	290	285	270							
15	122	125	120	126	130	139	133	130	127	118	119	118							
20	67.8	69.7	65.8	66.9	70.3	73.6	71.4	71.3	67.5	63.4	65.7	65.8							
25	48.5	50.6	48.2	48.7	51.0	52.2	51.3	52.1	48.5	46.7	46.8	47.4							
30	50.0	50.8	50.9	50.8	54.5	55.1	55.6	56.1	51.4	49.3	46.1	47.4							
35	63.4	63.0	64.7	64.7	70.3	70.2	70.8	70.3	64.9	62.1	56.8	58.4							
40	68.5	68.3	68.9	70.5	74.9	73.7	74.3	72.5	67.7	64.7	61.0	62.1							
45	60.6	60.9	60.0	62.3	65.1	63.6	63.9	62.3	58.4	56.0	53.8	54.3							
50	47.3	47.6	46.1	48.2	49.9	49.0	48.8	47.8	45.0	42.7	41.8	42.0							
55	32.6	33.0	31.7	33.2	34.2	33.9	33.4	32.9	31.1	28.6	28.5	28.9							
60	20.2	20.4	19.5	20.3	20.9	20.8	20.4	20.1	19.0	17.3	17.4	17.8							
65	11.7	11.9	11.1	11.6	11.9	11.9	11.6	11.5	10.8	9.27	9.73	10.2							
70	5.93	6.08	5.61	5.85	6.02	6.01	5.79	5.74	5.32	3.39	4.39	5.13							
75	2.23	2.32	2.08	2.19	2.26	2.27	2.14	2.11	1.69	0.25	0.54	1.84							
80	0.07	0.05	0.09	0.05	0.08	0.04	0.03	0.06	0.01	0.01	0.00	0.06							
85	0.00	0.00	0.00	0.00	0.00	0.00	0.00	0.00	0.00	0.00	0.00	0.00							
90	0.00	0.00	0.00	0.00	0.00	0.00	0.00	0.00	0.00	0.00	0.00	0.00							

C Range: 0 - 360DEG
 C Interval: 30.0DEG
 Test Speed: HIGH
 Temperature:25.3DEG
 Operators:Jianrong Li
 Test Date:2022-07-21

γ Range: 0 - 90DEG
 γ Interval: 1.0DEG
 Test System:EVERFINE GO-2000B_V1 SYSTEM V2.0.286
 Humidity:65.0%
 Test Distance:7.264m [K=1.0000]
 Remarks: Test by minnum beam angle

Checker: Jianrong Li

Assessor: Jianrong Li

Photometric Data Table [cd]

G/C	0.0	30.0	60.0	90.0	120.0	150.0	180.0	210.0	240.0	270.0
0.0	2914	2914	2914	2914	2914	2914	2914	2914	2914	2914
3.0	1933	2001	1980	2163	2279	2378	2242	2241	2211	2014
6.0	790.3	795.2	861.7	884.9	914.3	1067	961.9	907.7	915.3	845.8
9.0	354.8	372.5	365.0	398.5	413.0	460.8	423.4	412.0	408.9	360.8
12.0	197.7	213.4	198.0	221.5	218.2	239.2	232.9	218.3	225.0	196.4
15.0	122.3	125.2	120.1	126.2	130.1	139.4	133.0	130.4	127.3	118.5
18.0	85.46	85.43	81.25	83.55	87.94	91.87	88.68	88.78	83.98	78.52
21.0	62.04	64.09	60.45	61.10	64.33	66.99	65.01	65.37	61.62	58.15
24.0	50.54	52.87	50.06	50.65	53.02	54.50	53.17	54.07	50.51	48.45
27.0	46.89	48.49	46.96	47.35	49.73	50.67	50.54	51.16	47.27	45.50
30.0	50.02	50.78	50.89	50.83	54.52	55.10	55.62	56.10	51.44	49.32
33.0	57.86	57.72	59.15	58.99	64.13	64.35	64.95	65.00	59.73	57.16
36.0	65.77	65.24	66.85	67.21	72.85	72.38	73.03	72.19	66.87	63.97
39.0	68.82	68.54	69.36	70.68	75.49	74.41	75.08	73.41	68.50	65.42
42.0	66.42	66.51	66.31	68.41	72.05	70.69	71.21	69.37	64.88	62.09
45.0	60.62	60.85	60.03	62.28	65.15	63.65	63.87	62.29	58.45	55.97
48.0	52.92	53.25	51.89	54.14	56.20	55.03	54.98	53.71	50.61	48.28
51.0	44.29	44.65	43.17	45.08	46.64	45.86	45.71	44.78	42.30	39.83
54.0	35.55	35.84	34.55	36.08	37.26	36.88	36.52	35.90	33.94	31.31
57.0	27.35	27.50	26.40	27.57	28.42	28.22	27.75	27.35	25.86	23.72
60.0	20.25	20.44	19.48	20.34	20.92	20.83	20.35	20.13	18.97	17.34
63.0	14.72	14.87	14.06	14.66	15.05	15.04	14.69	14.53	13.69	12.17
66.0	10.35	10.50	9.851	10.24	10.54	10.52	10.20	10.12	9.477	7.939
69.0	6.907	7.043	6.535	6.796	7.012	6.986	6.759	6.688	6.222	4.448
72.0	4.261	4.374	4.024	4.202	4.326	4.309	4.148	4.114	3.723	1.415
75.0	2.226	2.317	2.081	2.191	2.260	2.271	2.144	2.106	1.686	0.2475
78.0	0.5737	0.6355	0.5334	0.5950	0.6143	0.6475	0.5444	0.5206	0.0885	0.0646
81.0	0.0476	0.0344	0.0702	0.0254	0.0579	0.0192	0.0125	0.0442	0	0.0001
84.0	0.0002	0	0.0097	0	0.0002	0	0	0.0000	0	0
87.0	0	0	0	0	0	0	0	0	0	0
90.0	0	0	0	0	0	0	0	0	0	0
G/C	300.0	330.0								
0.0	2914	2914								
3.0	1860	1766								
6.0	731.7	705.0								
9.0	351.0	331.5								
12.0	198.7	188.1								
15.0	119.4	117.6								
18.0	80.88	80.52								
21.0	60.26	60.48								
24.0	49.10	49.65								
27.0	44.39	45.36								
30.0	46.13	47.39								
33.0	52.23	53.74								
36.0	58.80	60.32								
39.0	61.34	62.50								
42.0	59.12	59.87								
45.0	53.80	54.25								
48.0	46.85	47.12								
51.0	39.17	39.41								
54.0	31.19	31.52								
57.0	23.74	24.14								
60.0	17.42	17.83								
63.0	12.50	12.93								
66.0	8.504	9.033								
69.0	5.327	5.974								
72.0	2.621	3.685								
75.0	0.5419	1.843								
78.0	0.0509	0.4098								
81.0	0	0.0421								
84.0	0	0								
87.0	0	0								
90.0	0	0								

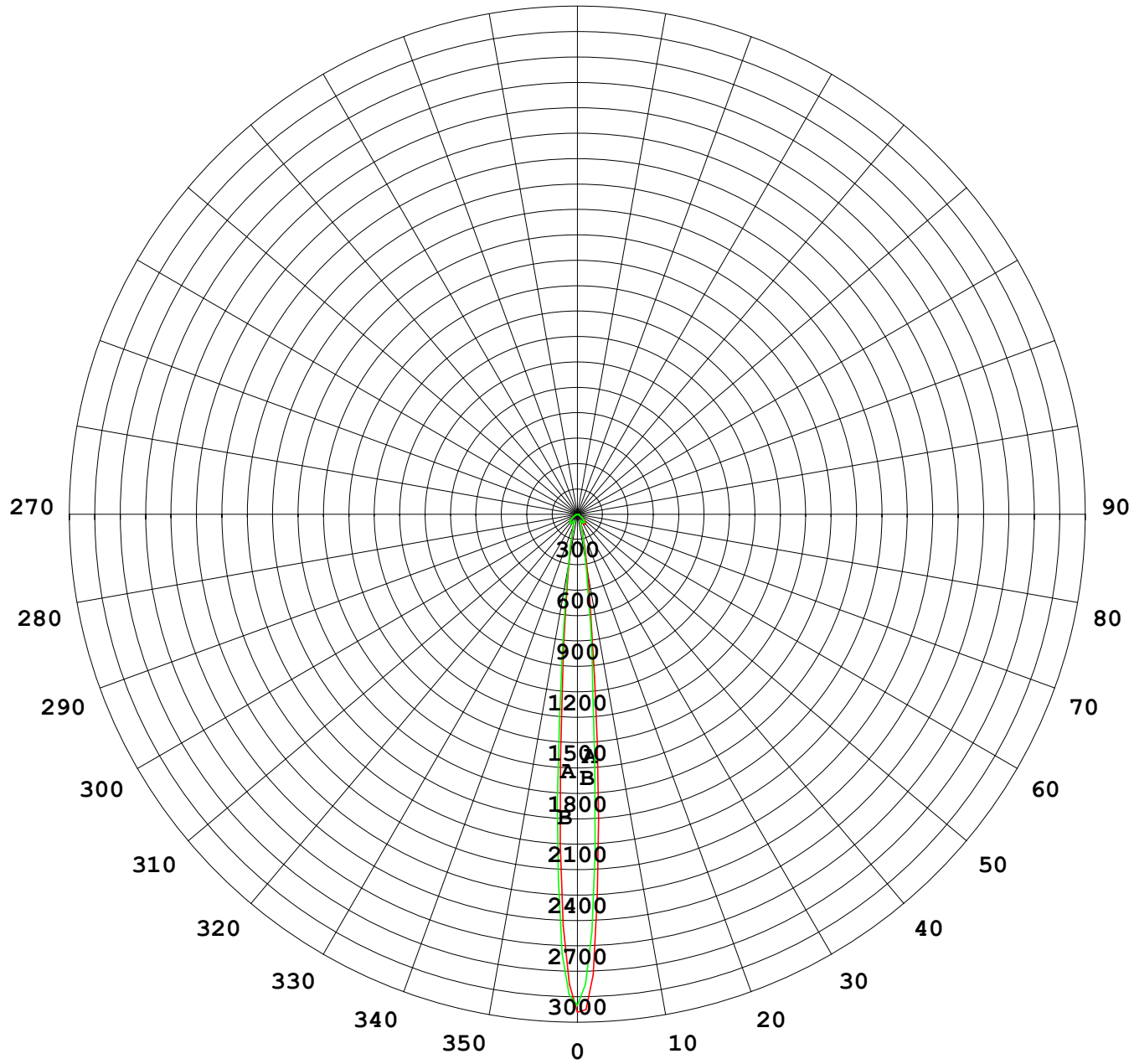
C Range: 0 - 360DEG
 C Interval: 30.0DEG
 Test Speed: HIGH
 Temperature:25.3DEG
 Operators:Jianrong Li
 Test Date:2022-07-21

γ Range: 0 - 90DEG
 γ Interval: 1.0DEG
 Test System:EVERFINE GO-2000B_V1 SYSTEM V2.0.286
 Humidity:65.0%
 Test Distance:7.264m [K=1.0000]
 Remarks: Test by minnum beam angle

Checker: Jianrong Li

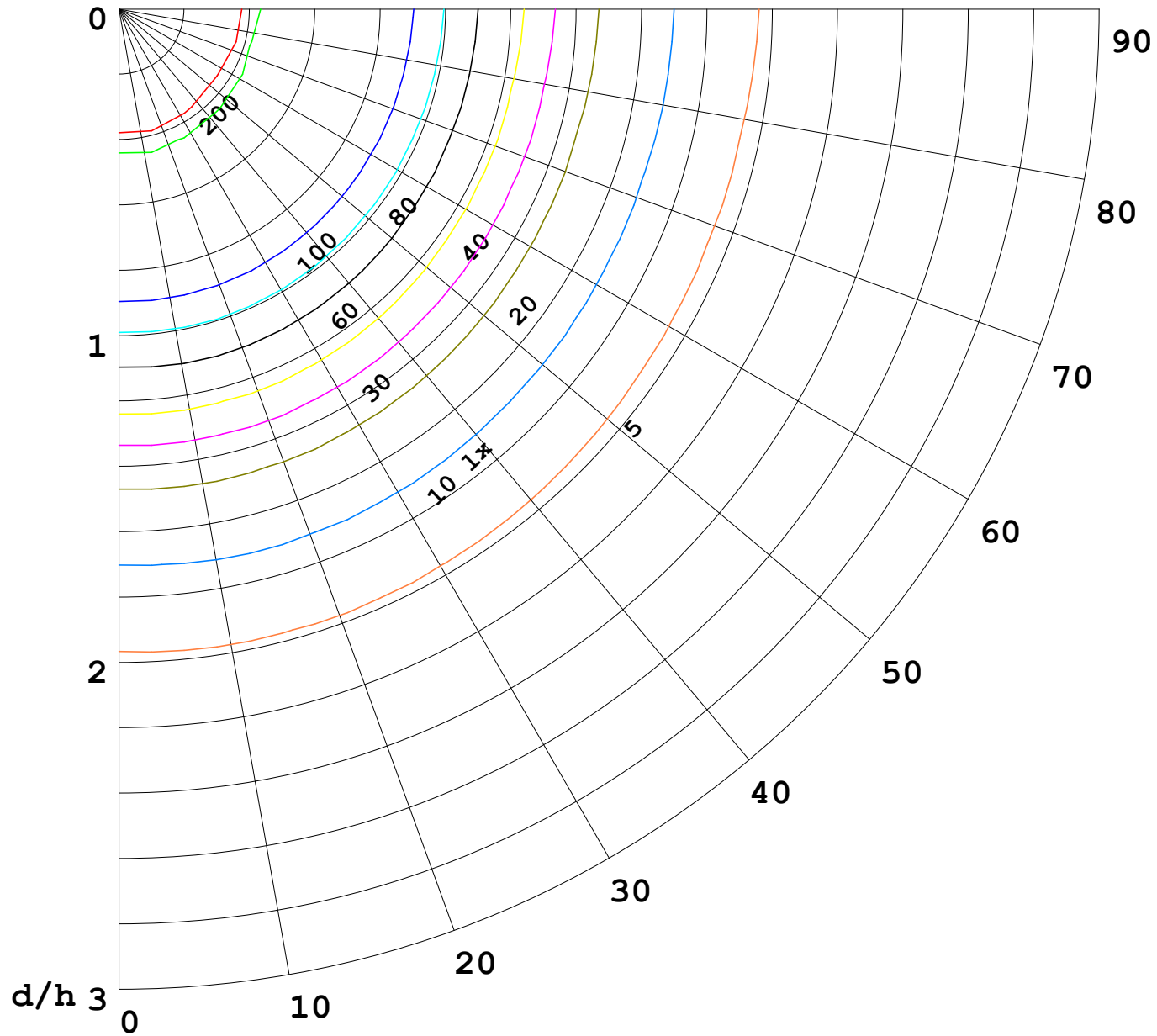
Assessor: Jianrong Li

I (cd)



1000 lm

$K = 1$



F = 1000 lm
 K = 0.7
 Hcc = 0.8 m
 Hfc = 0.0 m
 Eave = 100 lx

	Pcc	Pw	Pfc
—	70	50	30
—	50	30	20

